

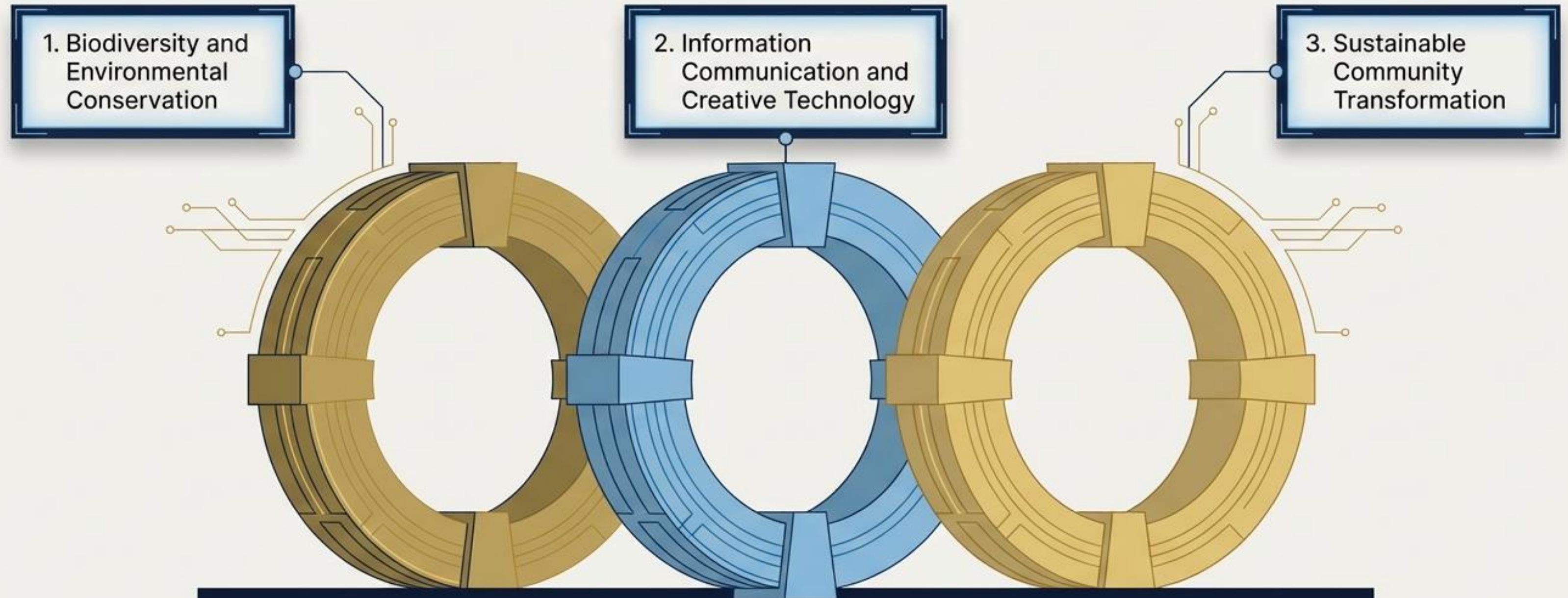
UNIMAS Post-Doctoral Scheme 2026

Accelerating Research Excellence:
Strategic Guidelines, Commitments,
and Outcomes.



The Macro Vision

Appointing top-tier Early Career researchers to drive measurable, high-impact output in three critical UNIMAS niches.



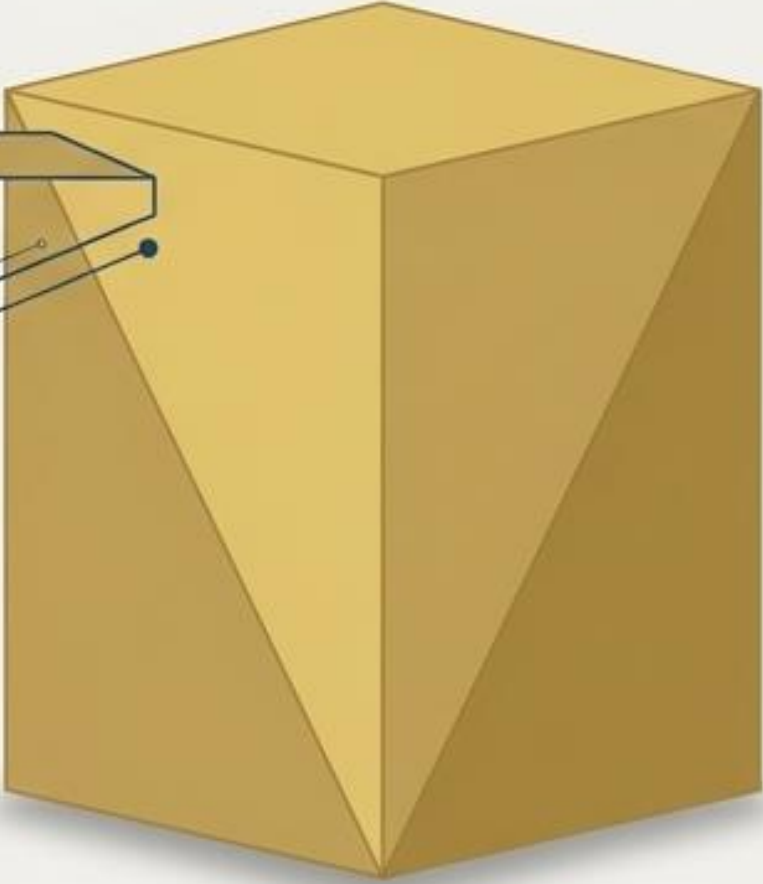
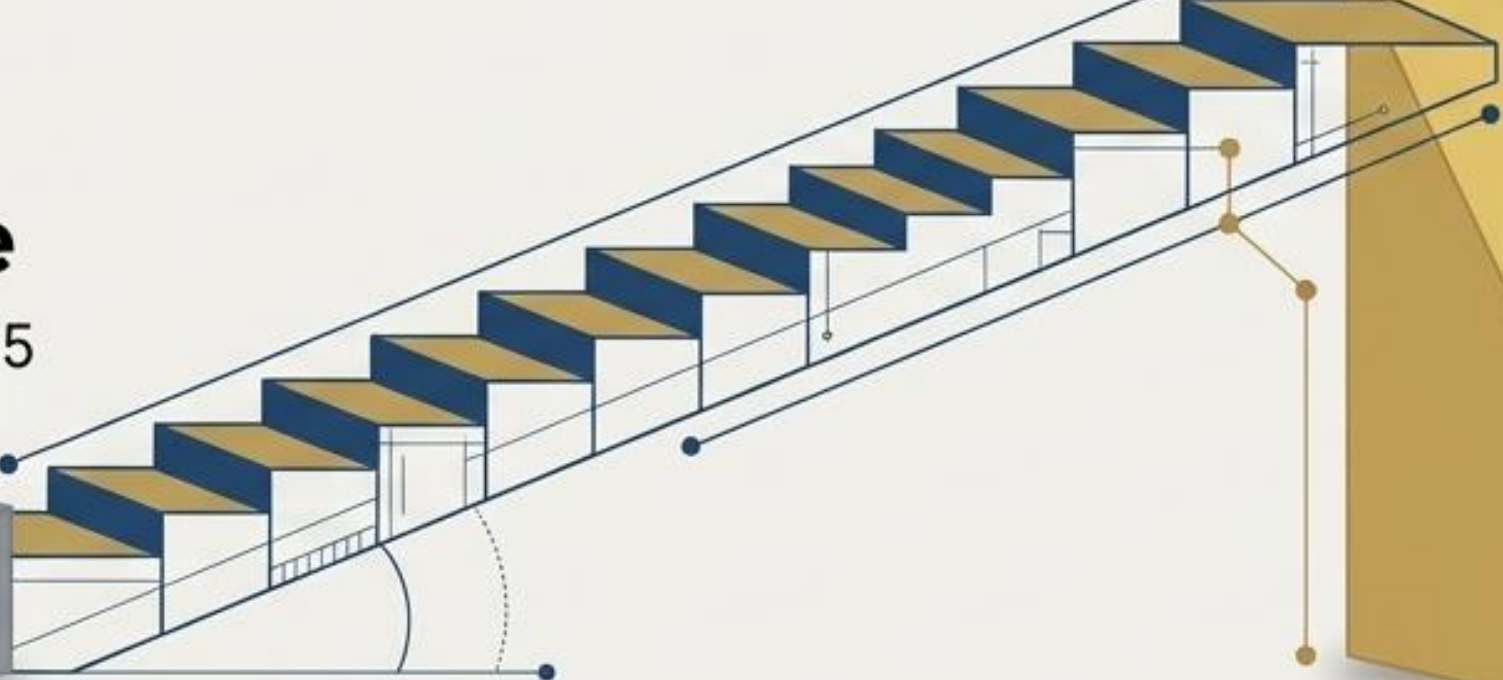
The 2026 Strategic Investment

2026 Upgraded Remuneration
RM8,000.00
(Inclusive of EPF and SOCSO)

The Catalyst Grant: Introduction of the RM10,000 one-off matching grant designed for industry and international network expansion.

Legacy Scheme

Baseline Salary: RM5,736.65



The Post-Doctoral Typology

UNIMAS-Funded (The Premium Track)

- RM8,000/month Remuneration
- Full medical & leave benefits
- Highest output KPIs (3 WoS/yr)

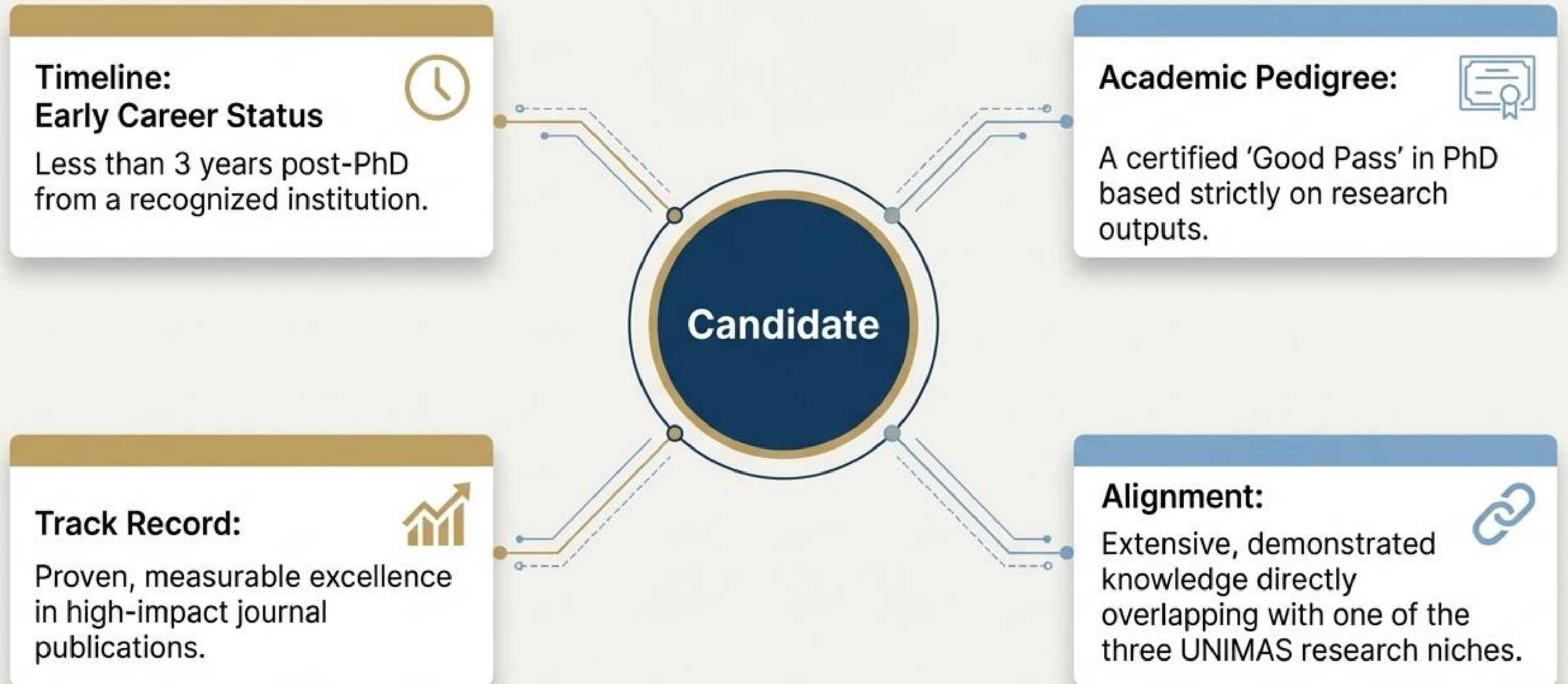
Externally-Funded (Industry/Grant Track)

- Salary dictated by active grant
- Output dictated by funder
- Baseline UNIMAS KPIs (2 WoS/yr)

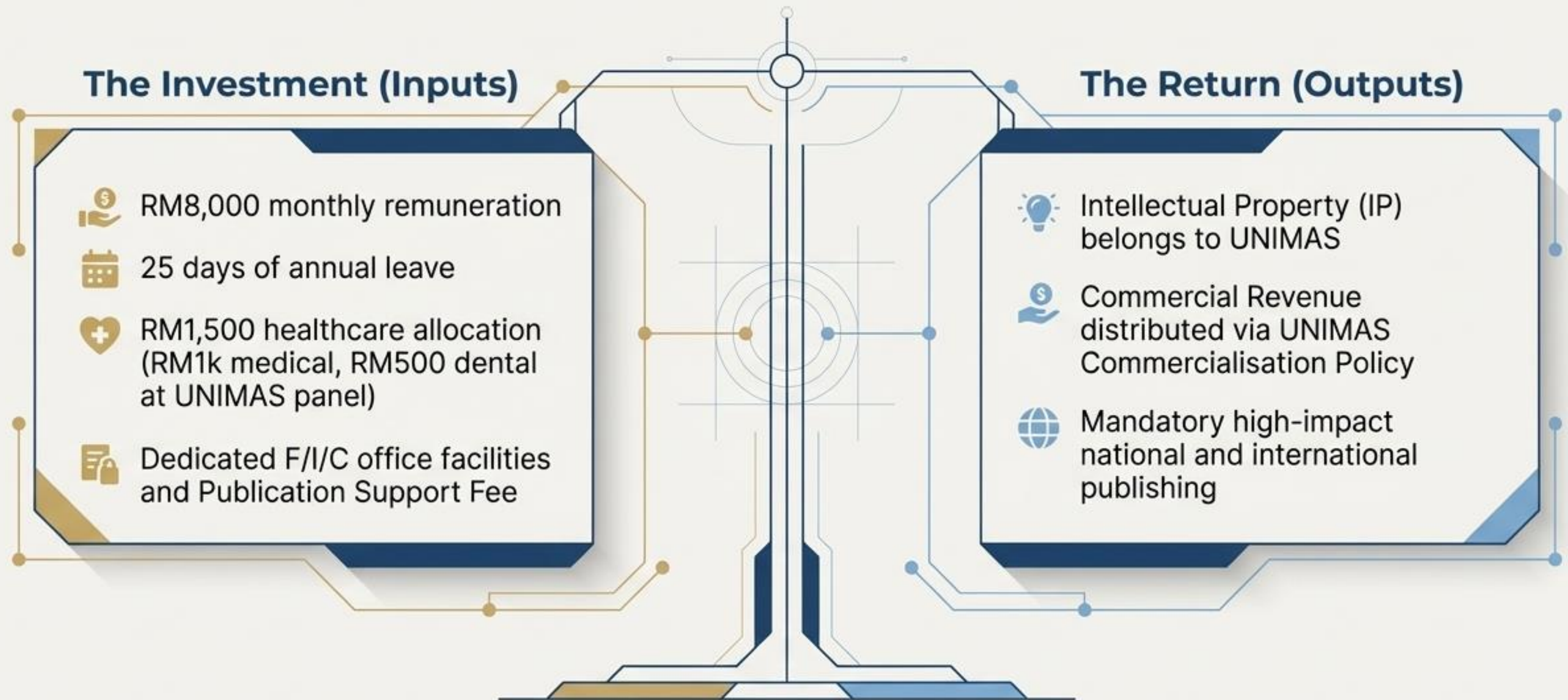
Honorary (The Affiliation Track)

- Unpaid by Scheme
- Publication Support Fee included
- Baseline KPIs (2 WoS/Scopus/yr)

Who Are We Looking For?



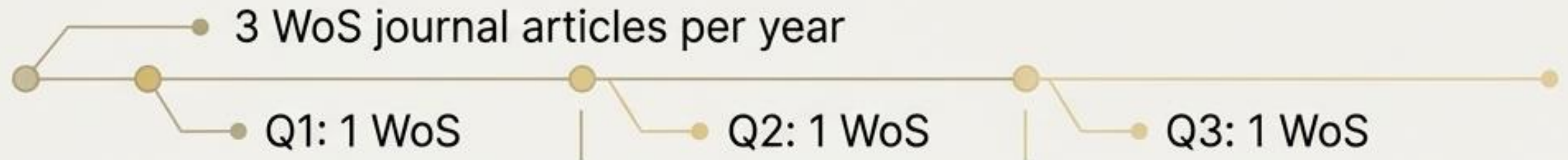
The Mutual Commitment



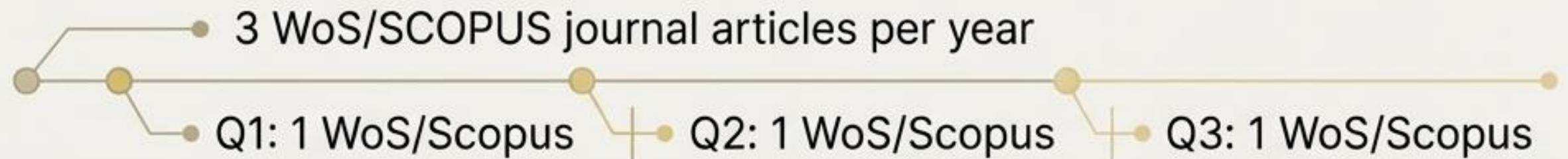
Output KPIs Demystified

UNIMAS-Funded Candidates

STEM Cluster



Social Sciences & Arts



Externally-Funded / Honorary Candidates

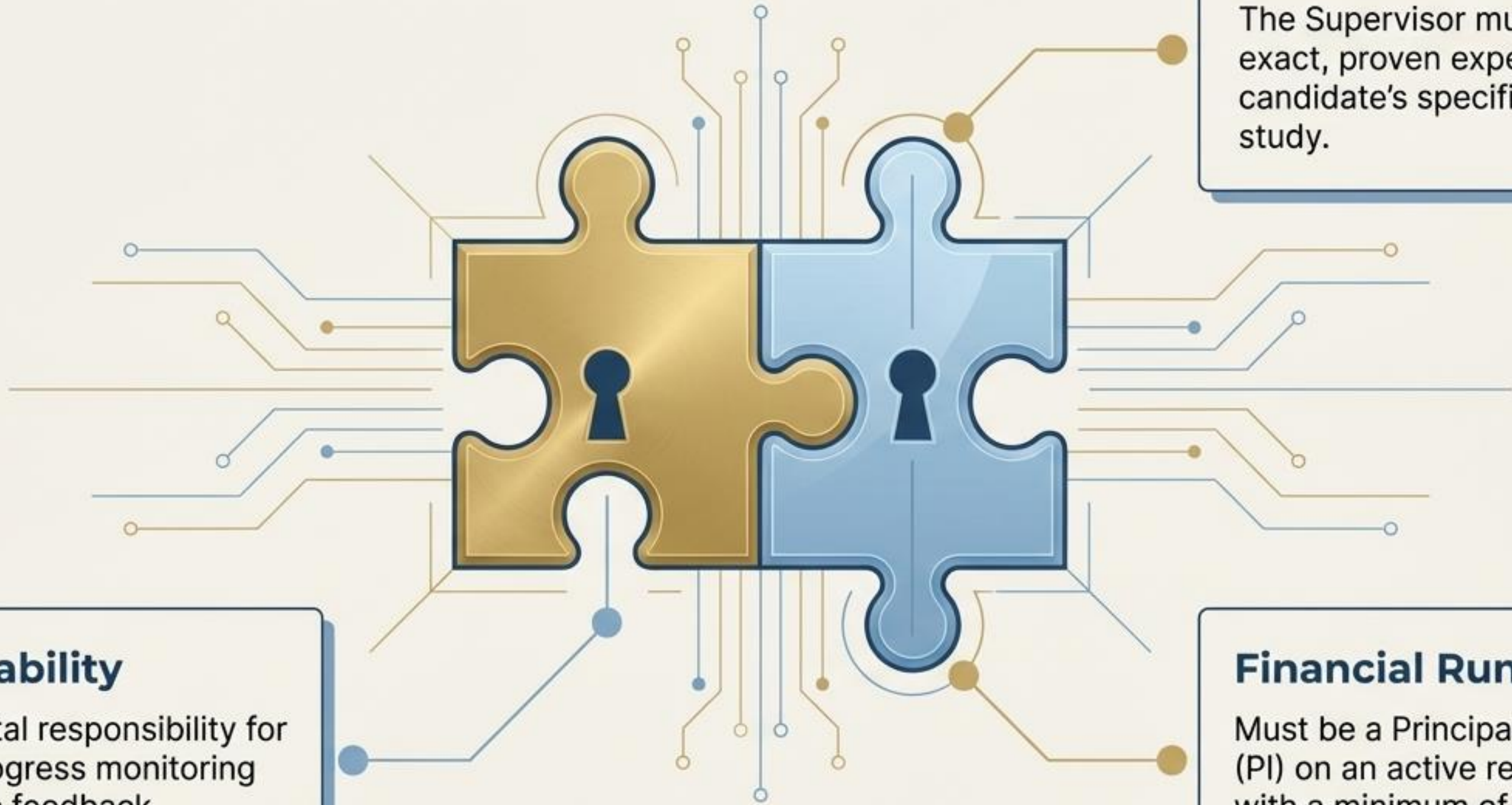
STEM Cluster

2 WoS journal articles per year.

Social Sciences & Arts

2 WoS/SCOPUS journal articles per year.

The Power of the Supervisor



Expertise Alignment

The Supervisor must possess exact, proven expertise in the candidate's specific field of study.

Accountability

Assumes total responsibility for 6-month progress monitoring and periodic feedback reporting to RDICE.

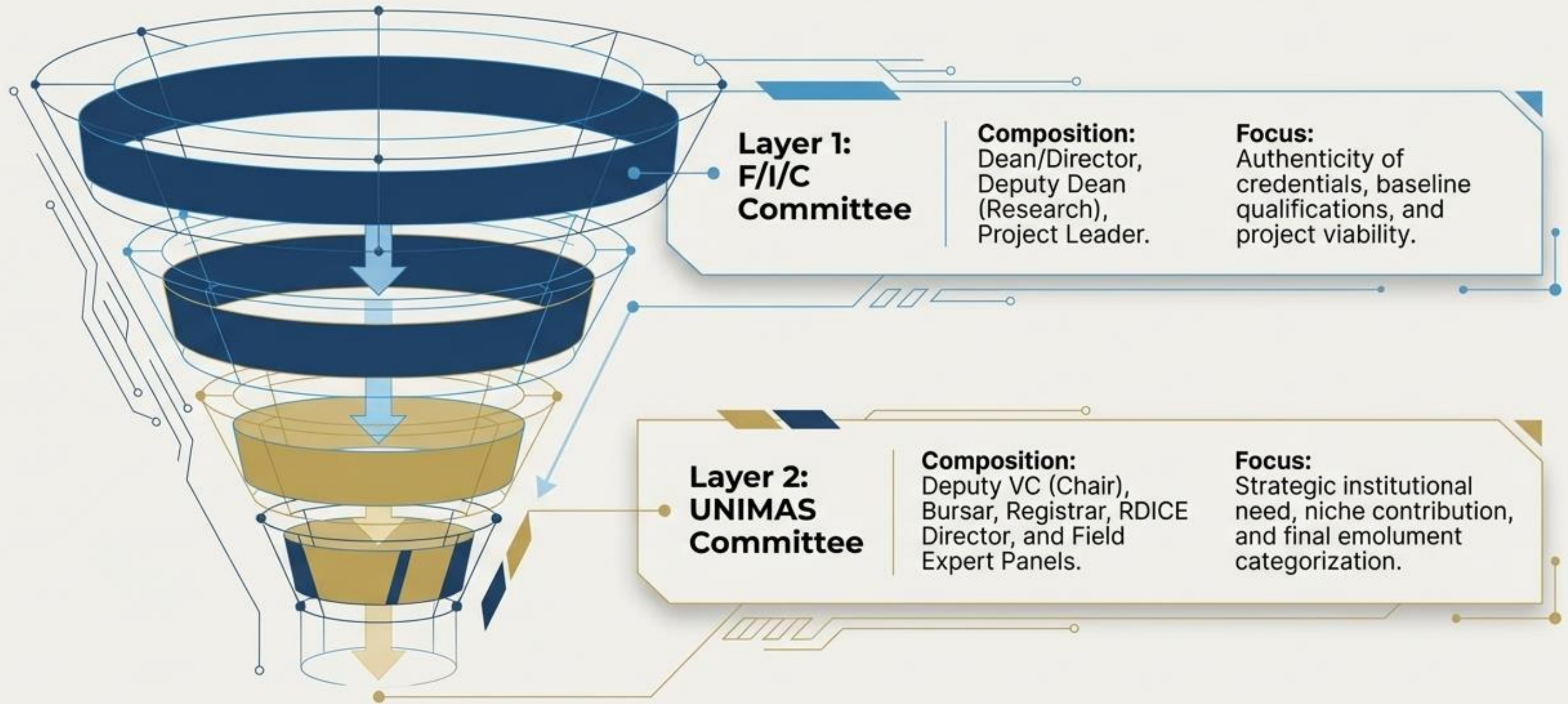
Financial Runway

Must be a Principal Investigator (PI) on an active research grant with a minimum of one (1) year remaining.

The Application Pipeline



The Two-Tier Governance



International Talent Onboarding



✓ **Visa First:**

Non-Malaysian citizens must secure their Ph.D. degree and professional visa/working permit before reporting for duty at the F/I/C. (Registrar's Office assists upon document submission).

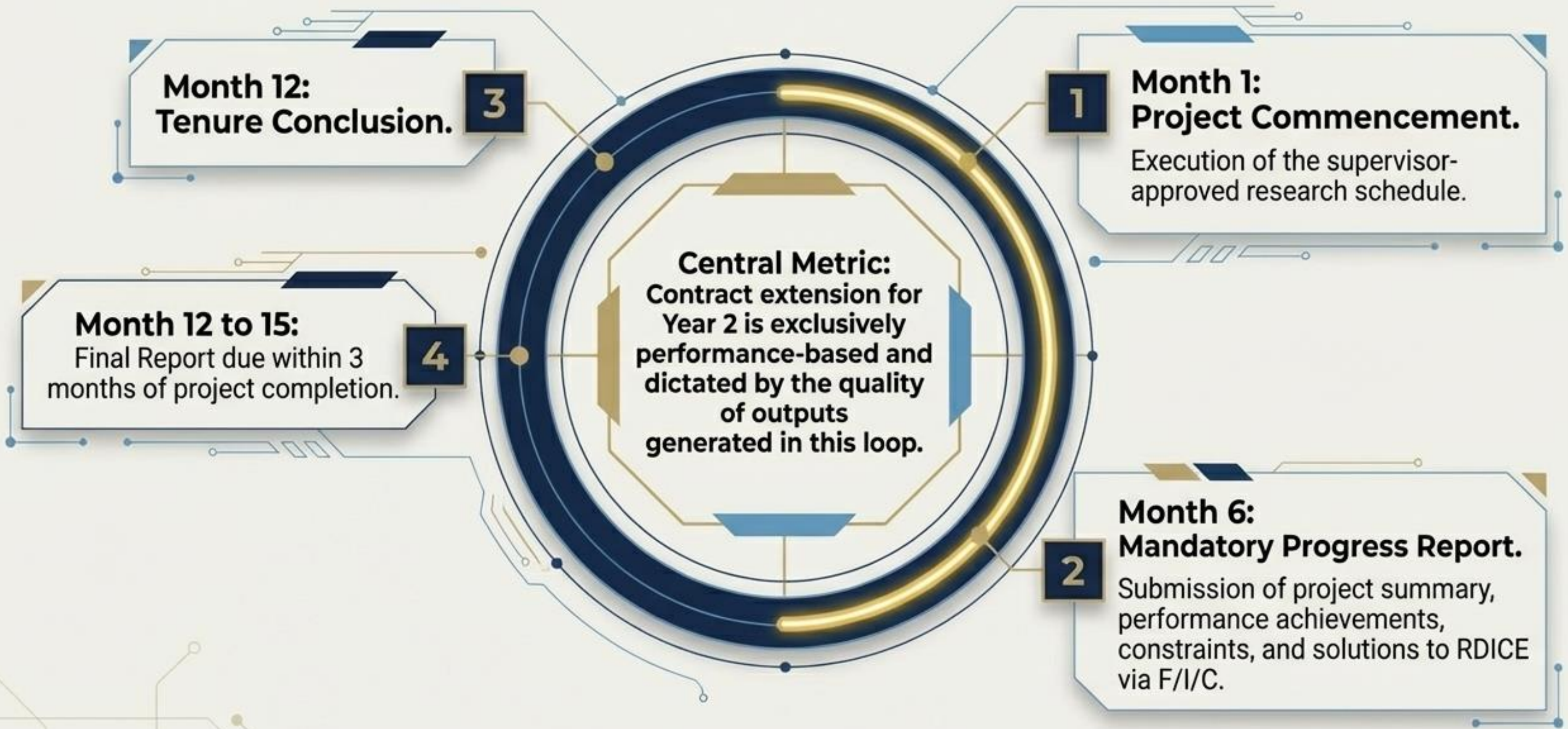
✓ **Legal Binding:**

Two copies of the Post-Doctoral Research Agreement and Non-Disclosure Agreement (NDA) must be signed and stamped (costs borne by candidate).

✓ **Reporting Protocol:**

Candidates must report to RDICE with Offer Letter, Visa, NDAs, and bank/tax statements to initiate the UNIMAS Bursary payroll.

Project Lifecycle & Monitoring



Conditions of Service & Termination



Exit Protocol Montserrat

Mandatory 3 months' notice required for early exit, or a buyout equivalent to 1 month's salary.

Strict Prohibitions Montserrat

Total ban on submitting any financial claims to the University outside the agreed Appointment Offer Letter parameters.

Termination Triggers Inter Montserrat

Immediate termination rights held by UNIMAS for medical unfitness (Medical Board recommended), criminal conviction, bankruptcy, or gross misconduct. University retains right to terminate at any time with 3 months' notice.

Measuring Success

The Baseline (2021-2023)

Past cohort of 8 researchers generated over 30 high-impact publications (26 WoS/Scopus journals, 4 books/chapters).

The 2026 Trajectory

The new elite cohort of 7 scholars, armed with the RM10,000 matching grant and RM8,000 premium salary, is projected to steeply accelerate UNIMAS's commercial and academic IP output.

Call to Action

Become a Catalyst for Research Excellence at UNIMAS.

Actionable Step: Download Form UNIMAS/RDICE/PD directly from the Centre for Research, Development, Innovation, Commercialisation and Economy (RDICE) portal.

[QR CODE
PLACEHOLDER]

Academic Inquiries:
Contact F/I/C Deans & Supervisors

Administrative & Visa Inquiries:
Contact UNIMAS Registrar's Office